

## Victoria Moore : Checking In On You

This is a Fairisle knit scarf, the artist has imagined the colour changing as the pattern repeats for an ombre effect. (pattern repeat x6)

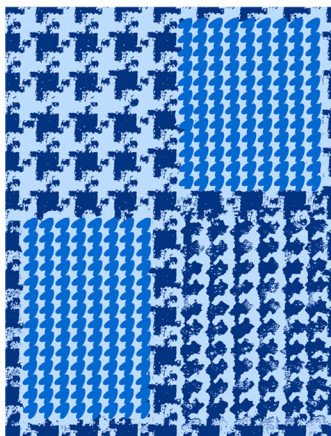
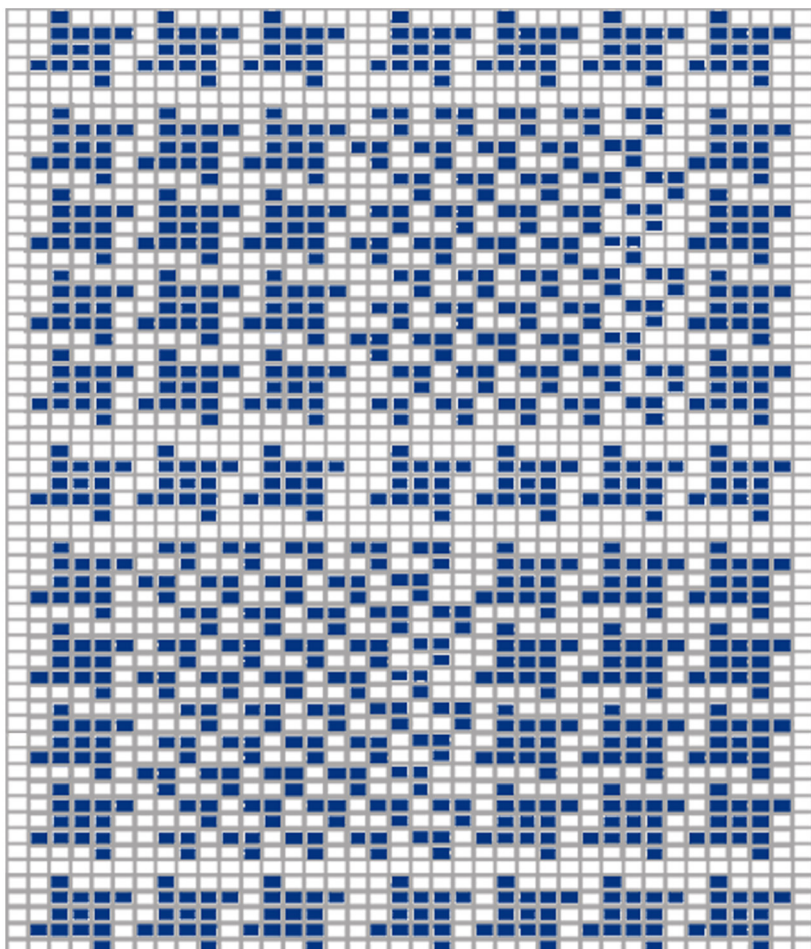
Knitted on 5mm needles using Aran weight yarn.

You will need:

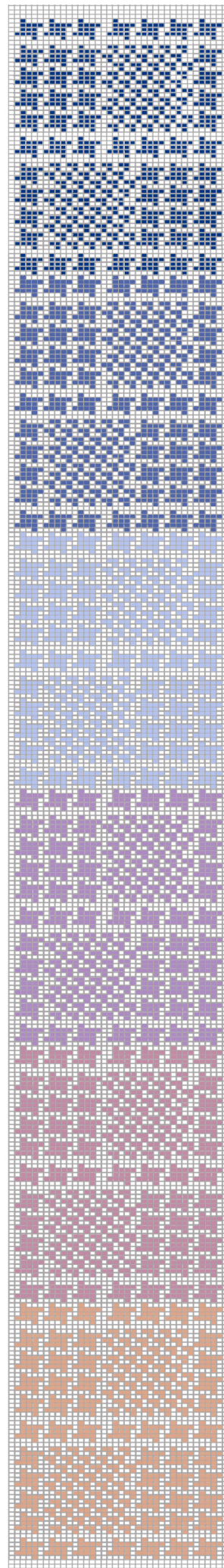
200g white or light blue yarn.

25g each of six colours for the Fairisle details

- cast on 38sts.
- knit 3 rows in white/ light blue.
- follow the pattern chart below (repeat 59 rows) until scarf measures 150cm.
- \* you will need to weave in some of the longer floats as you knit.
- knit a final 3 rows in white/ light blue and cast off.



- 21cm -



- 150cm -



### **Artist Biography**

Victoria Delphine Moore is a surface pattern designer and illustrator, selling printed fabric to leading retailers across the high street, including Zara, Topshop and Urban Outfitters. Most recently she has been focusing on illustration practices and has been working on commissions for card designs. These designs range from illustrative florals to architectural landmarks, and have been utilising calligraphy as an enhancing accompaniment.

Visit [www.cwplus.org.uk](http://www.cwplus.org.uk) to learn more about our Arts in Health programme.