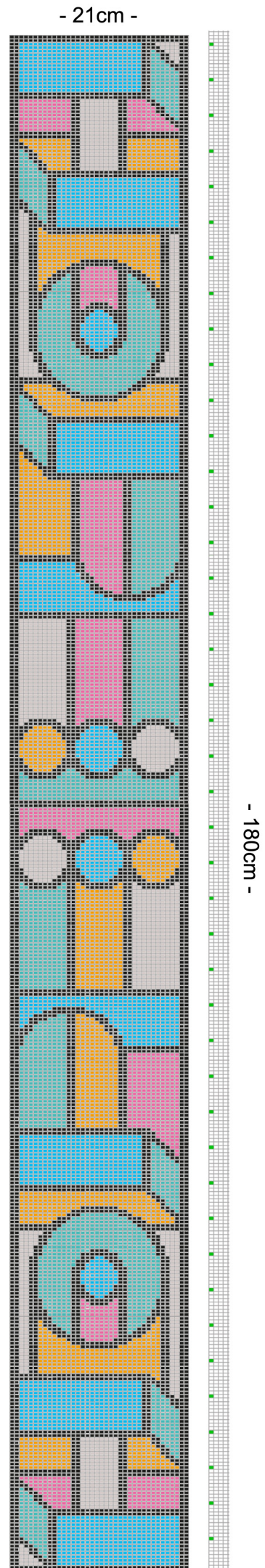
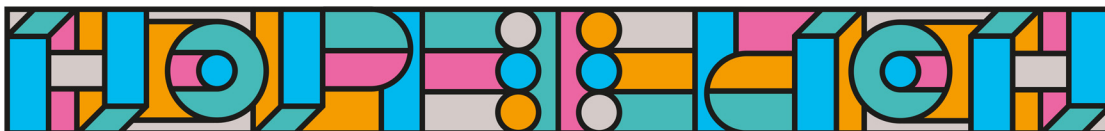


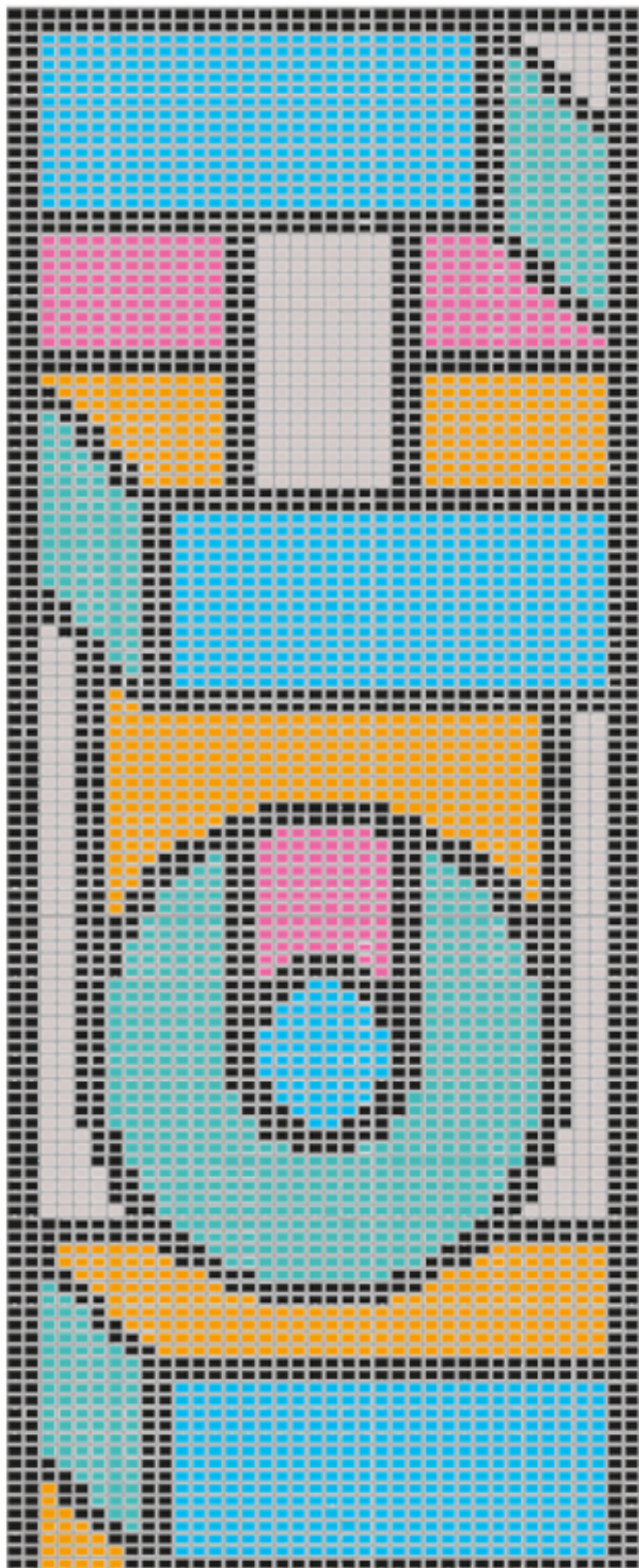
Robe Lowe *Supermundane* : **SUPER HOPE**

This is an Intarsia knit pattern, using Aran weight yarn, knitted on 5mm needles. You will need around 50g of each colour: pink, blue, orange, green, black, cream.

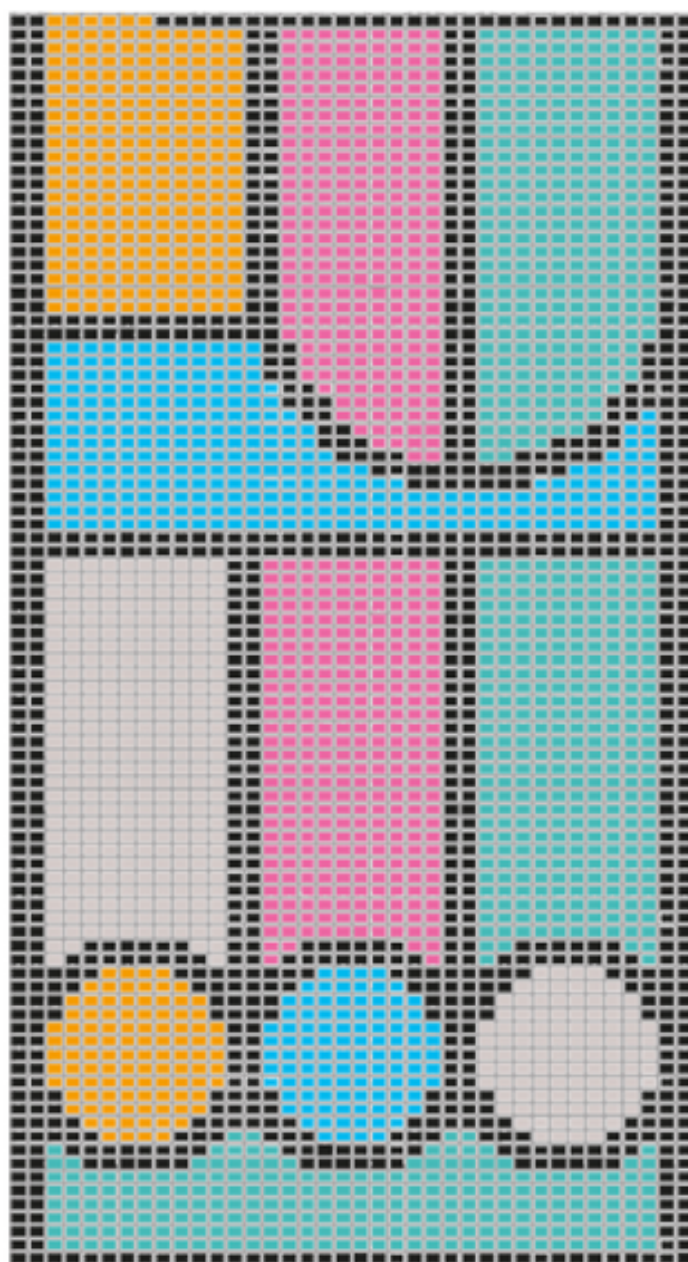
- cast on 38sts in black.
- follow the intarsia pattern chart opposite, working in stocking stitch.
- cast off and weave in the ends.



cast on edge (38 sts)

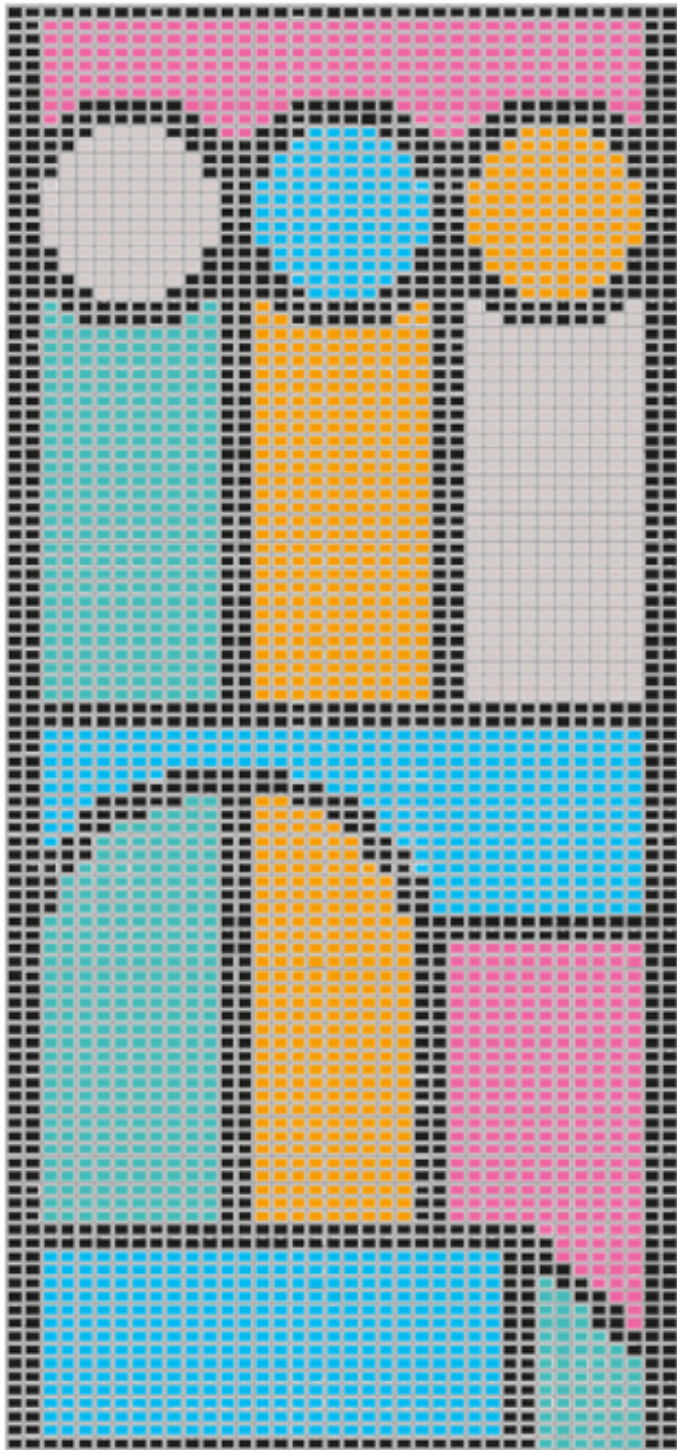


125 rows

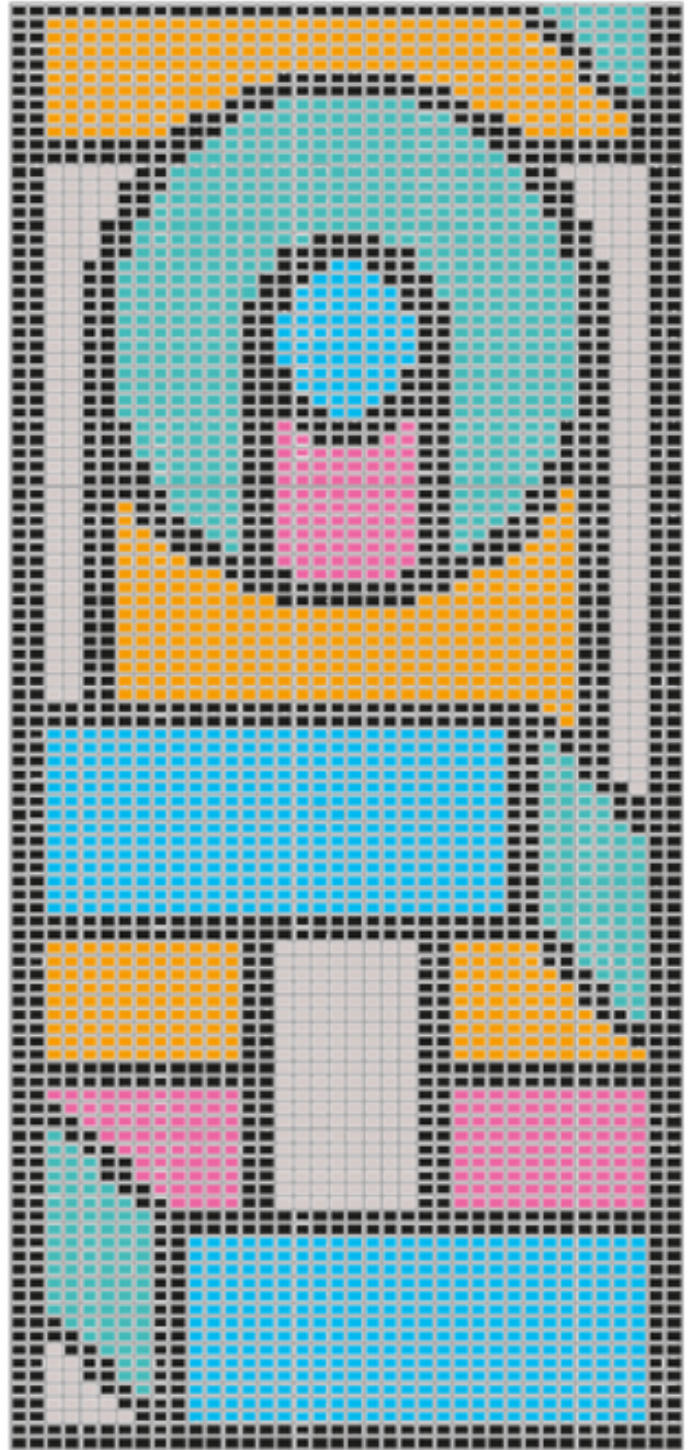


216 rows

row 217



324 rows



cast off edge

432 rows



Artist Biography

Rob Lowe (also known as Supermundane) is an artist living and working in London. His work employs Emotional Geometry and Melancholic Humanism along with humour and poetry.

He has been published and exhibited worldwide with permanent installations in Leeds train station and Great Ormond Street. He is the author of *Lines Are Human*, a book looking at how we define our space in the world through line.

Visit www.cwplus.org.uk to learn more about our Arts in Health programme.