

CW+

Art Guide

CWPLUS Registered Charity no.1169897

Lower Ground Floor



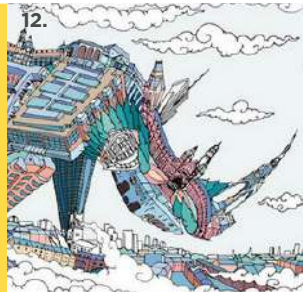
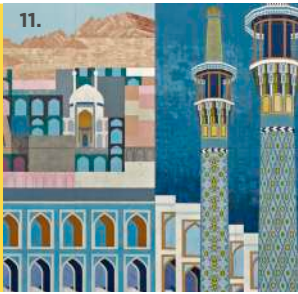
Ground Floor



First Floor



Second Floor



Third Floor



1. Julian Opie

Jeremy Walking in Coat, Kris Walking, Sian Walking and Verity Walking 2010

Outpatients Corridor

Drawing from influences such as billboard signs, classical portraiture and sculpture, Opie 'paints' using a variety of media and technologies creating three-dimensional works.

2. The Heritage Exhibition/ Timeline

Outpatients Atrium

This timeline highlights key milestones in the hospital's history which dates back to 300 years to the inception of Westminster Hospital. The exhibition showcases historical items documenting Westminster Hospital's rich history.

3. Allen Jones

The Acrobat 1993

Outpatients Gate 4

Allen Jones is a British Pop artist who was a major influencer on the movement during the 1960's. This sculpture was commissioned for the atrium, and was installed as the hospital was built due to its size.

4. Sir Eduardo Paolozzi The Healing Arts 1997

Main Entrance

Paolozzi was a Chelsea resident and generous patron of the CW+ arts programme. This cast bronze sculpture was commissioned in 1997. All donations to this collecting box are used by CW+ to help fund our art and design programme.

5. Jonathan Delafield Cook Jos 1996

Atrium Lift Bank B

This intricate charcoal drawing, often mistaken for a photograph, was commissioned by CW+. It is available to buy as a limited edition print. Contact CW+ for details.

6. Chloe Dewe Mathews A Modern Herbal 2016

Patient Transport Corridor

Mathews discovered that the nearby Chelsea Physic Garden, founded in 1673 by the Worshipful Society of Apothecaries was used for training apprentices in the identification and use of medicinal plants.

7. Albert Irvin Hollywood 1995

Atrium Escalators

The work of the Abstract Impressionists had an enormous effect on Irvin, who moved away from figurative work towards a more abstract style. The title *Hollywood* comes from Hollywood Road opposite this hospital's entrance.

8. Paolo Veronese The Resurrection 1587

The Chapel

This work, depicting the resurrection of Jesus Christ, dates back to the 16th century. It was originally an altarpiece in the church of San Giacomo. Veronese was one of the leading painters of the Venetian Renaissance.

9. Isaac Julien Stones Against Diamonds 2019 CW+ Edition

Atrium Lift Bank D

This digital work was shot in Iceland's remote ice caves, and draws inspiration from a letter written by Brazilian architect Lina Bo Bardi.

10. Sian Tucker Falling Leaves 1993

Academic Atrium Lift Bank B

Sian Tucker is primarily a textiles artist, who creates traditional motifs in bright colours. Her sources come from non-European styles, but has also noted the strong influence of early 20th century art such as the cut-outs of Matisse.

11. Edward Bawden Fantasy on Islamic Architecture 1966

The Atrium Lift Bank C

Bawden was a printmaker, illustrator and designer. He served as a war artist during World War II, where he travelled to the middle east. The intricate details mirror those found in traditional Islamic architecture.

12. Andy Council Mother and Baby Rhino 2015

Outside CW+ MediCinema

Andy Council takes local landmarks and uses them to create inventive illustrations of animals. This work incorporates London architecture such as the Royal Albert Hall, the Albert Memorial and the Natural History Museum.

13. Adam Nathaniel Furman Radiance 2019

Reuben Maternity Centre

Adam Nathaniel Furman is an artist and designer based in London. *Radiance* is made from waterjet-cut colourful ceramics and spans the exterior and interior of the maternity centre.

14. CW+ and Jinny Blom CW+ Greenhaven 2016

Indoor Garden Lift Bank D

This space provides a quiet place for patients, visitors and staff away from the ward, as well as providing a location for gardening workshops, part of our Arts for All programme.

15. Patrick Heron Three Banners 1992

Atrium Lift Bank C and D

Specifically commissioned for this large atrium, Patrick Heron's banners are collaged enlargements derived from small gouache studies. They are hung using assemblies of yachting components, allowing them to revolve.

Hospital Wide

16.



**16. Accademia Film
RELAX Digital**

*Waiting Rooms/Wards
RELAX Digital* was commissioned by CW+ in partnership with film company Accademia to create a selection of short films that create a calming and relaxing environment.

17.



**17. Melvin Chantrey
Waterfalls 1993**

Lift Bank D
This set of murals depicts a waterfall flowing from the 5th floor down to a glistening pool on the ground floor. One of the first commissions made for the hospital, this set of works unifies the hospital building.

18.



**18. Chelsea Arts Club
Various Artists**

Ground Floor and First Floor
Chelsea Arts Club was founded by artists in 1891. Two thirds of the 4000 members must be practising artists, and the other includes curators, gallery owners, writers, dancers and musicians.

The CW+ Art Collection

CW+ is the official charity of Chelsea and Westminster Hospital NHS Foundation Trust. We manage a collection of over 1,800 works of art displayed throughout our hospitals and sites to enhance the environment for our patients, visitors and staff. This guide highlights some of our favourite works of art on display here at Chelsea and Westminster Hospital. We believe that bringing original artwork and integrating good design into our hospitals helps to create a healing environment. CW+ continues to develop the collection by commissioning artists and designers to create work specifically for the hospital. You can find out more about any work on display by looking out for its artwork label. To learn more about the collection or to download this art tour on your smartphone or tablet, visit www.cwplus.org.uk/collection